

Diorama

Israel in the 1950s



The 00 gauge was chosen for my diorama because English locomotives, which were in service in the 1950s in the state of Israel, which was founded in 1948, are for the most part only available in 1:76 scale.



Auhagen's „Flöhatal“ station became the basis for the „Beer Sheba“ station. Large parts are similar to today's museum station or could easily be converted. With embossed sandstone masonry the typical look of the country was produced. I took the round gable windows, the lintels and the Arabic station sign from photographs and printed them out.



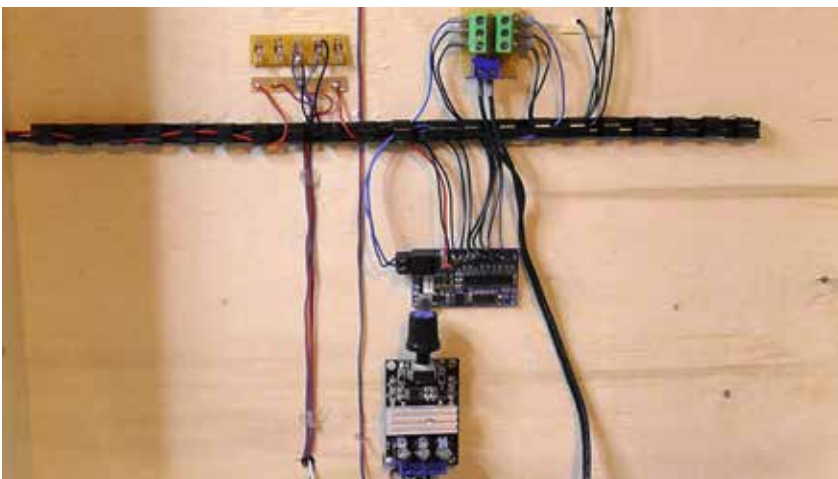
The next buildings were an English-style water tower and a windmill, both as a kit from Dapol. The scale here is 1:76 as opposed to 1:87 for the railway station.





The windmill is supposed to be reminiscent of the Montefiore Mill in Jerusalem's Old City, which has recently been completely renovated. It can be seen in the background of many pictures of the station in Jerusalem.

Both buildings were colour-matched and aged. The mill got a stepper motor that regulates the speed with a PWM control. In addition, as in the station, a digital LED control (from digital-bahn.de) is installed, which regulates the on and off times of the house lighting with a random generator.



In the middle the random generator for the light, below the PWM control for the windmill motor.



The power supply unit for the windmill (left) and the Roco digital control unit are screwed onto a retractable base.



The rock formation was built up with styrodur and model building plaster and patinated. For the desert floor there are ready-made granules, as well as desert vegetation from Busch, trees from Noch and the palms from Preiser.



The Hornby locomotive Stanier Class 8F of the LMS became a steam locomotive of the young Israel Railways by redrawing, equipped with LED lights (Reichsbahn lanterns), self-built cowcatcher and digital sound of the King Class.

The original locomotive is now part of the museum station in Beer Sheba.



The passenger coach has been lightly patinated with the inevitable desert sand, the goods wagons already a little more clearly. They have not yet been redrawn and bear the letters P.R. for Palestinian Railways.



The national flag has been raised to mark the founding day of the State of Israel on 16 May.



The transport company „Eged“ has been based in Palestine since the 1930s. There are only a few motor vehicles, most of which come from the motherland of the former British Mandate.



In the founding years, a lot of improvisation was necessary, so that quite a few vehicles still revealed their origin, like the bus from Northern Ireland here.



This three-wheeled small truck, which is supposed to take away the processed flour, is also part of it.



This idyll was probably installed in the right place at the wrong time ...



What such a pandemic can cause can be seen here.

שדות תל מכוני ירושלים ח'סה
 שדות תל מכוני ירושלים ח'סה
 שדות תל מכוני ירושלים ח'סה

שדות תל מכוני ירושלים ח'סה



The bus licence plate and lettering were taken from original pictures, the flag and posters from the Internet.



P. R. P. R. P. R. P. R. P. R. P. R. P. R.

P. R. P. R. P. R. P. R. P. R. P. R.
 P. R. P. R. P. R. P. R. P. R. P. R.

P. R. P. R. P. R. P. R. P. R. P. R.



The locomotive lettering was more complex to produce, i.e. it had to be redrawn. The road number is borrowed from the museum locomotive in Beer Sheba. The logos were produced by the 'Drucke-ronkel' as sliding pictures. These were then very easy to attach. A little more work was required to age the lettering, also to soften the edges of the foil.

Model photos for the diorama desert railway station in Israel on the bank holidays in the 50s



The railway station in Be'er Sheva, then part of the Ottoman Empire, during World War I with Australian soldiers.



Here, the railway station has been converted into a museum and café in the midst of 21st century tower blocks.



A Turkish memorial was dedicated in honour of the Ottoman war dead in 1999. In the background is museum locomotive 70414.



Luckily, there are also the camels from Preiser, which are actually clumsy animals and are a little too small due to the 1:87 scale.



The background of the diorama is modelled on a rocky landscape in the Negev desert, Be'er Sheva is considered the 'capital of the Negev'.



The Montefiori mill in Jerusalem, which was restored to its original condition a few years ago.



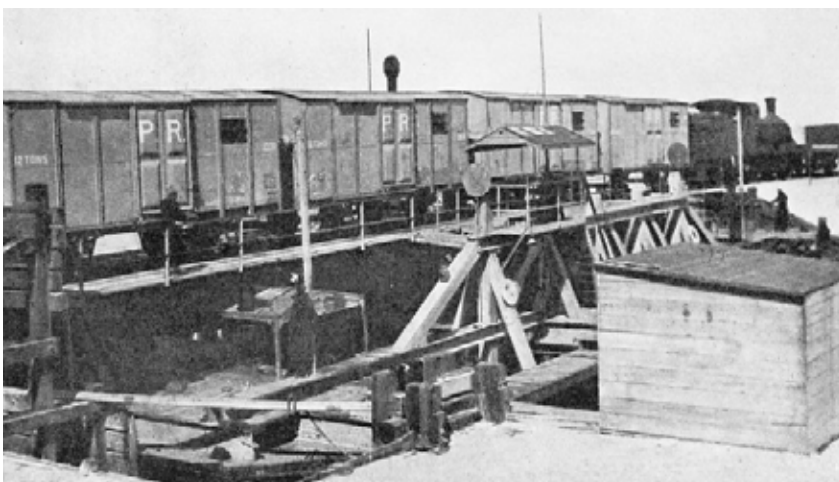
A decorated Class 8F locomotive, as modelled for the diorama.



EGGED buses have been widely used in Israel since 1933. After several attacks, the company now has 71 armoured buses. It is now the largest bus company in Israel and is based in Tel Aviv.



These two buses were the model for the lettering.



The goods wagons were still labelled P.R. of Palestine Railways for a long time.

